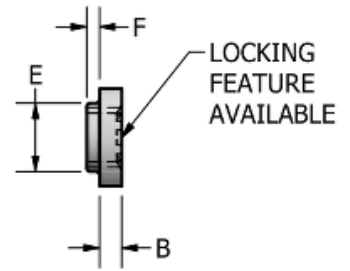
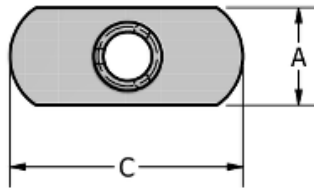


Double Tab Spotweld Nut: ND 3324



Thread Size	3/8-16
Width (in)	5/8
Thickness (in)	9/64
Length (in)	1 1/2
A (in)	0.625
Tol A (in)	+0.030 / -0.005
B (in)	0.141
Tol B (in)	+0.004 / -0.002
C (in)	1.500
Tol C (in)	+0.015 / -0.015
E (in)	0.438
Tol E (in)	+0.010 / -0.010
F (in)	0.090
Hole In Sheet (in)	0.453
Material	C1010 High-Welding Quality, Low Carbon Steel
Finish	Plain, Unless Specified
Threads	Unified Standard Class 2B ASME B 1.1-2003



BUCKEYE FASTENERS COMPANY

DISTRIBUTED BY



advancecomponents.com

972-446-5500